



Sydney's most trusted source of skilled labour tradespeople.

Providing quality mechanical and electrical
personnel to the food and beverage industry.

CHAINLINK

www.chainlink.com.au



The Chainlink Story

Chainlink commenced operations in 1997 to meet the skilled labour needs of the food and beverage packaging industry.

For over two decades, we have built a reputation based on trust and dependable service, helping many of Australia's most iconic brands.

Founding Director, Craig Cooper, who started his career as a Fitter/Machinist in 1983, understood that there are two Achilles heels in every production facility; firstly, the increasing complexity of machinery that's prone to mechanical failure; and secondly, the challenge of maintaining a resource pool of skilled tradespeople.

These challenges have continued to grow for all companies in the FMCG packaging industry, and it is these challenges we help our clients overcome every day. Bringing deep industry knowledge to the table, Chainlink supports many of Australia's leading FMCG brands in several key ways:

- ✦ Providing urgent repairs and breakdown services
- ✦ Providing qualified tradespeople to help you meet demand
- ✦ Reducing the burden of compliance, training, and recruitment costs
- ✦ Bridging the knowledge gap through specialist skills and experience

Our clients depend on us to provide sound advice to help them manage their production facility more profitably.



Sydney's most trusted source of skilled labour tradespeople

The right people with the right skills, when you need them most.

Meeting the demand for skilled labour is a challenge for every production manager. Loss of production-time is costly, while sourcing reliable and tradespeople that 'fit' your requirements can be seriously time-consuming.

Whether you need a skilled trade specialist for a long-term hire, rapid-response shift coverage, or for a one-off project, Australia's leading food and beverage companies have relied on Chainlink for over 20 years to provide the best labour tradespeople in Sydney.

So, when having quality tradespeople really matters, you can trust Chainlink to deliver.



Electrical Trades

Need breakdown coverage?

Save time and money – our specialist electrical team will get your production line up and running fast.

For comprehensive details please refer to page 14



Mechanical Trades

Man-down?

Never miss a deadline again – with just one phone call our experienced mechanical tradespeople will be there to help 24/7.

For comprehensive details please refer to page 12



Building Maintenance

Need it done?

From painters to plumbers, to chippies and brickies, Chainlink has the skilled labour tradespeople you need to get projects done. Save money, save the hassle – we can even manage the job for you.

For comprehensive details please refer to page 15

Tapping into Chainlink's team of skilled labour tradespeople provides many practical benefits;

- ✦ Convenient one-call solution
- ✦ Quality manpower when you need it
- ✦ Balance production demand with staffing levels
- ✦ Quickly resolve skilled trades-labour supply issues
- ✦ Reduce the internal cost of recruiting and onboarding time
- ✦ Augment internal team capabilities with external specialist labour skills
- ✦ Improve staff morale & culture

Trust Chainlink to provide the trades you need so you can focus on what really matters.

SERVICES

How can we help you today?



Production Cover

We understand your #1 priority is to ensure production is maintained. But this is not an easy task when production volumes ebb and flow. That's why our clients rely on us to provide appropriate staff, Whether it's cover for a single shift, or meeting a long-term skill shortage, Chainlink will get the right person in place.

For that unexpected crisis, our 24/7 rapid response service has you covered.



Projects

Projects come in all shapes and sizes, but one thing you can count on is that they require specialist skills and competent project management. Resourcing projects without compromising production can be a challenge. That's why so many facility managers turn to Chainlink to pull together the right team with the right skills.

Chainlink can support you with specialist skills and labour, or we can manage the entire project for you.



Maintenance

Maintenance is the key to reliable production, but allowing preventative and corrective maintenance to slip, is a recipe for expensive down-time. Talk to Chainlink to get that essential maintenance done and prevent loss of production.

In the event of a breakdown, you can rely on Chainlink's corrective maintenance team to affected temporary repairs and return later to rectify the problem completely.



Relocating & Installing

Relocating & Installing your production facility is a challenging experience. The cost of production down-time, overtime, and dealing with the unexpected curve balls can be demanding for even the most battle-experienced manager.

You can rely on Chainlink to support you every step of the way – from planning and logistics, to staffing and advice.



Workshop

Chainlink's workshop facilities are located in the St Marys industrial area. Our dedicated and experienced engineering team will ensure that all your mechanical repairs are completed with precision.

With over 20 years experience in the food and beverage industry, we have the skill to repair or build replacement components for all makes and models.

Our workshop capabilities include:

- ✦ Fabrication
- ✦ All types of welding
- ✦ Guarding
- ✦ Design work
- ✦ Milling and lathe work



Our people

Exceptional people are at the heart of everything we do. That's why we place such a high value on our team of dependable tradespeople. Over 20 years, we have earned an enviable reputation of being the most trusted provider of skilled tradespeople to the food and beverage industry.

That's why each of our core values places the people we work with at the centre of every decision.

Our values

At Chainlink, we believe everything we say and everything we do defines who we are.

Our success, both past and future, is intrinsically linked to our five Core Values.





Safety comes first...

At Chainlink, we take the safety of our people seriously. Every team member is provided ongoing training to encourage safe work practices, with a strong focus on awareness and self-management. We are proud of our record and continue to strive for a zero-injury workplace. Like to know more? Visit our website to download our WHS Policy.

At Chainlink, we take the safety of our people seriously

What do our clients say?

We reckon it's hard to top a 20+ year track-record of providing exceptional customer service, and our industry-leading clients seem to think we've earned our stripes too.

 **630,000**

With over 630,000 hours of skilled- labour provided, we are trusted by Australia's most iconic brands...

At Chainlink, we take the safety of our people seriously. Every team member is provided ongoing training to encourage safe work practices, with a strong focus on awareness and self-management.

We are proud of our record and continue to strive for a zero-injury workplace.

Like to know more? Visit our website to download our WHS Policy.

Client Testimonials



Michael Perrott

General Manager Operations – The Kitchen

Chainlink is an integral part of our business, providing experienced contractors to ensure our production and plant equipment is maintained on a day-to-day basis. They also provided us with project support on capital works, process improvements and ongoing building maintenance enabling us to achieve all set KPI's. Chainlink is a pleasure to work with, and are helping us to achieve our objective of minimising downtime and reducing costs in our facility.

Andrew Young

Maintenance Facilitator – Kuisine

Chainlink is a well-organised group of tradesmen, providing production coverage and maintenance. They are easy to work with and I can count on them to provide well thought-out solutions for our manufacturing facility. Their workshop has carried out repairs and manufactured replacement parts to our specific needs. I highly recommend them!

Rakesh Swami

Production Manager – Bidfood

Chainlink supplies us with mechanical trades support for preventative maintenance and call outs – they are always available to discuss and strategize a solution. Chainlink is a company which demonstrates a commitment to quality and customer service.



Mechanical Trades Personnel

Chainlink's experience in mechanical engineering spans over twenty years.

Our experts have the expertise to work on a vast array of equipment, providing worry-free mechanical labour-hire solutions with a simple phone call. Although our dedicated team are always on stand-by to cover shifts at short notice, we also provide long-term production and maintenance coverage.

You can depend on Chainlink to find the perfect mechanical tradesperson for your team – oh, and don't forget, we can source replacement parts for you and repair equipment in our workshop.

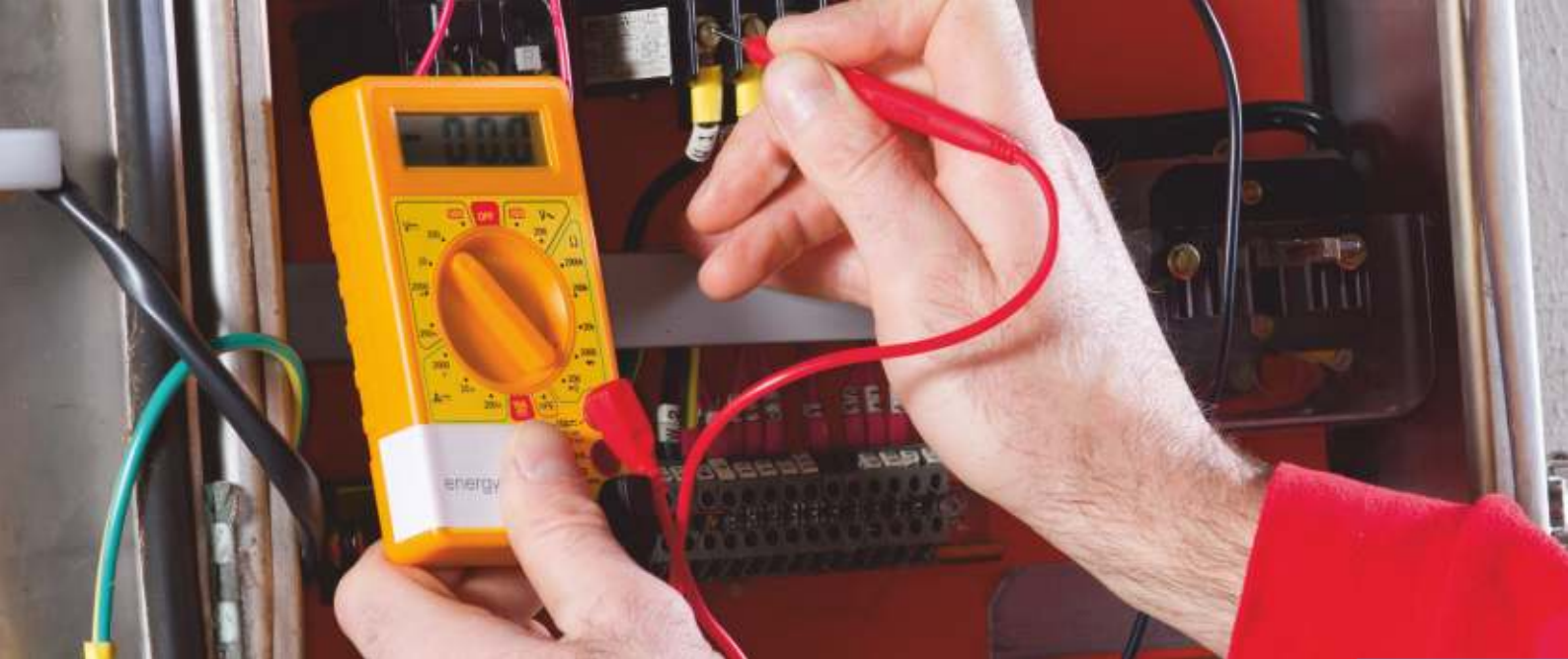
Chainlink's speciality mechanical labour services include:

- ✦ Emergency mechanical breakdown service
- ✦ Mobile workshop fully-fitted for on-site repairs
- ✦ Expertise in a vast range of equipment and machinery
- ✦ Workshop for repairs, fabrication, and engineering projects

Depend on Chainlink for experienced mechanical trades

We get it. You are one-of-kind. Every facility we work in is unique, that's why we only employ the most dedicated tradespeople, the people who are passionate about their trade and always mastering new skills.

Remember, we can urgently repair parts with our fully-equipment mobile workshop



Electrical Trades Personnel

Chainlink's team of electrical engineers and labour trade specialists bring the best of the profession into your business. Our team has been hand-selected based on their experience, technical expertise, and personal attributes, such as being at the top of their profession.

Whether you are dealing with a breakdown crisis, a short-term resource shortage, or filling a 'skills-gap' in your team, you can trust Chainlink's skilled electrical tradespeople to have the answer.

Don't forget...our expert electrical team can help you source or engineer replacement parts.

You can depend on Chainlink to do it well...

We understand your facility is complex and unique. That's why we invest in developing the skills of our team so that you always get the expertise you need.

Chainlink's specialist electrical skills include:

- ✦ Mission-critical breakdown coverage
- ✦ Parts - sourcing and repairs
- ✦ SCADA Software
- ✦ Programmable Logic Control (PLC)

Remember, we provide urgent breakdown cover for mission-critical equipment, and our mobile support team can help you get production back up and running, fast!



General Specialist Trades Personnel

Outsourcing is not just a buzz-word, it's smart business.

Finding the right people to do the job well is not as easy as it sounds. Sure, you can search "Plumbers near me" on Google and have 1,000 options in a flash, but how do you find a quality tradesman?

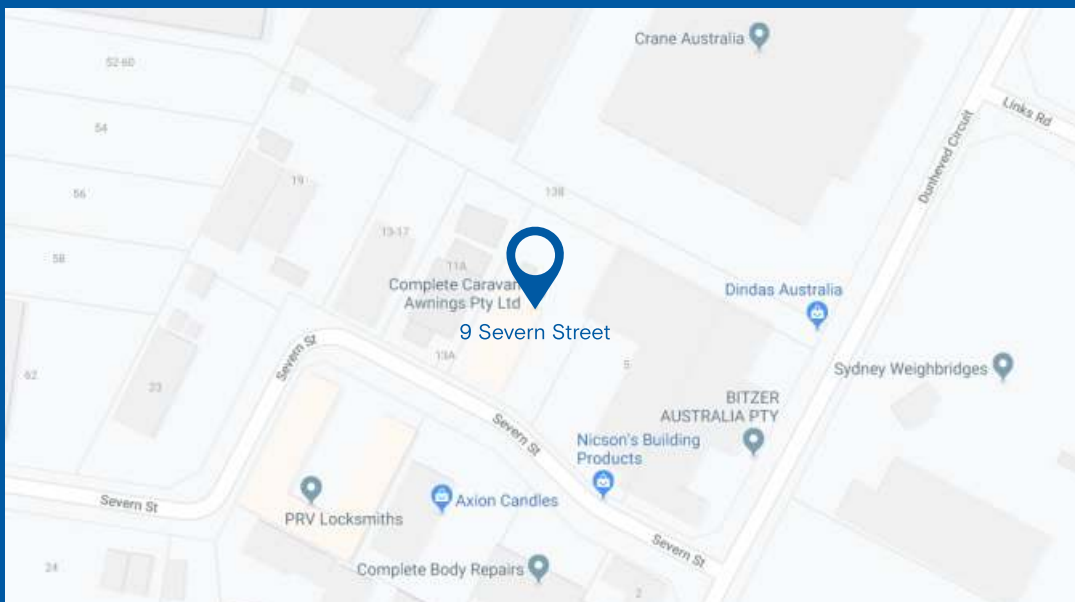
Our hand-selected team of skilled tradespeople are the best of the best. Experienced, qualified, reference-checked, police-checked, and best of all, they are reliable and trustworthy.

When it comes to tradespeople, Chainlink has you covered:

- ✦ Painters
- ✦ Line Marking
- ✦ Plumbers
- ✦ Roofers
- ✦ Bricklayers
- ✦ Carpenters and Joiners
- ✦ Tilers
- ✦ Trades Assistants

CHAINLINK

Sydney's most trusted source of
skilled labour tradespeople.



WORKSHOP

Unit 6, 9 Severn Street,
St Marys 2760



CALL US

1300 624 539



WEBSITE

www.chainlink.com.au